

**MVC**  
PORTUGUESE  
LIMESTONES



*MVC MAGAZINE*

*FIRST EDITION*

**COVERING THE WORLD WITH  
PORTUGUESE LIMESTONE**

**MVC**

A photograph of a modern building facade constructed from large, rectangular panels of light-colored limestone. The stone has a natural, slightly textured appearance with subtle veining. On the left side of the facade, the letters 'MVC' are prominently displayed in a bold, sans-serif font, carved into the stone. To the right, there is a glass entrance with a dark frame. The building is set against a clear, light blue sky. The overall aesthetic is clean and minimalist, emphasizing the natural beauty of the Portuguese limestone.



Bem-vindos à primeira edição da revista da MVC - Portuguese Limestones, uma empresa que se dedica à extração e transformação de pedra natural. Há mais de 30 anos que fazemos da pedra portuguesa a nossa arte.

Nesta edição inaugural, convidamo-lo a conhecer algumas das obras que marcaram o nosso ano.

Desde projetos arquitetónicos a detalhes artísticos minuciosos, esta revista é um reflexo do nosso compromisso com a qualidade e a excelência.

Junte-se a nós nesta viagem pelo nosso setor, onde cada pedra conta uma história de dedicação, inovação e arte.



Welcome to the first edition of MVC - Portuguese Limestones magazine, a company dedicated to the extraction and transformation of natural stone. For over 30 years, we have been making Portuguese stone our art.

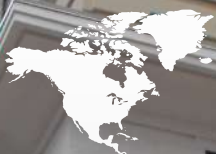
In this inaugural edition, we invite you to discover some of the projects that have defined our year.

From architectural jobs to intricate artistic details, this magazine reflects our commitment to quality and excellence.

Join us on this journey through our sector, where every stone tells a story of dedication, innovation, and craftsmanship.

**MVC**  
**PORTUGUESE  
LIMESTONES**





NORTH  
AMERICA

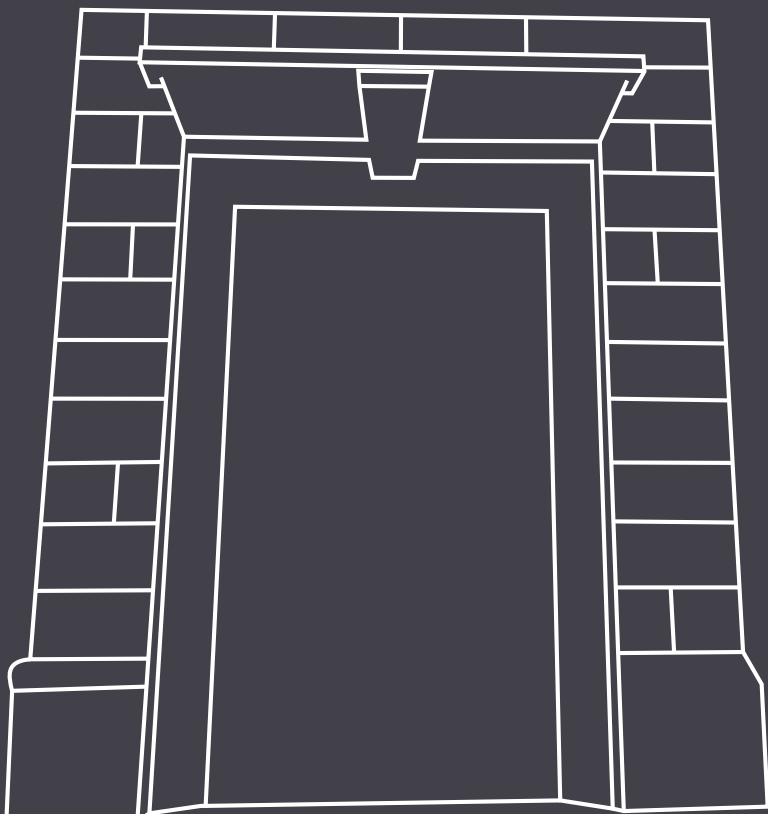


# ROSAL

## LIMESTONE

The **JW MARRIOT** is a five star hotel located in the heart of houston texas designed by the renowned "Gensler" the architecture offices that count with the Portuguese Limestone Rosal.

#HONED #BRUSHED #POLISHED #SANDBLASTED #BUSH  
HAMMERED #SCORED #SCRATCHED #SPLIT FACE WITH  
GROOVE #MEDIEVAL







ASIA



BERK HOUSE

# JURASSIC LIMESTONE

The **BERK HOUSE** is residential house in Japan region, made with the **jurassic Limestone** it's true example of the modern style with limestone

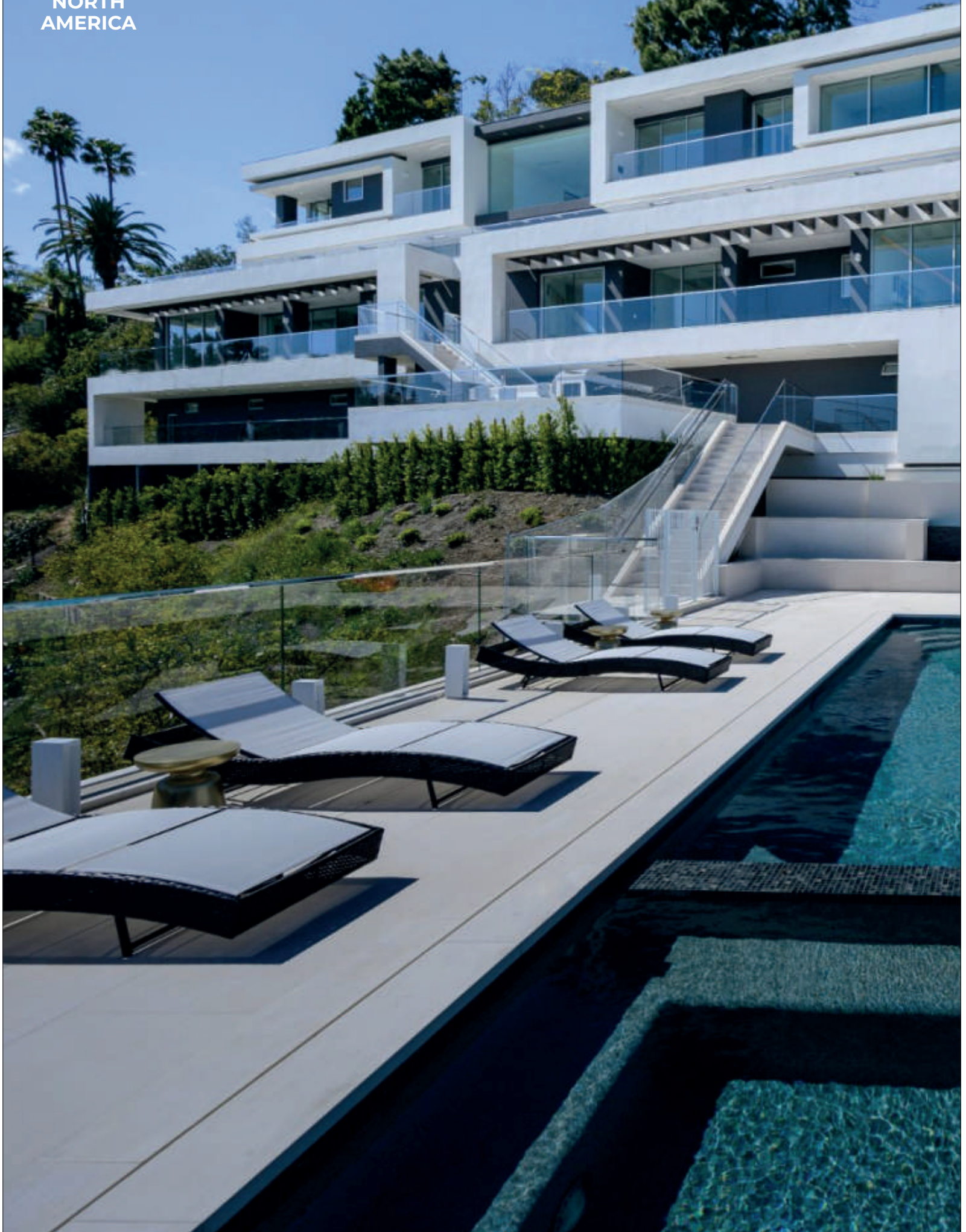
#HONED #BRUSHED #POLISHED #SANDBLASTED  
#BUSH HAMMERED #SCORED #SCRATCHED #SPLIT  
FACE WITH GROOVE #MEDIEVAL







NORTH  
AMERICA





# CODAÇAL DUNAS

## LIMESTONE

The **BEL AIR ROAD** by Roman James is mega mansion located in the beautiful city of Las Vegas, this house count with our CODAÇAL limestone that is present in the **balcony** and the **pool deck**.

#HONED #BRUSHED #POLISHED #SANDBLASTED #BUSH  
HAMMERED #SCORED #SCRATCHED #SPLIT FACE WITH  
GROOVE #MEDIEVAL





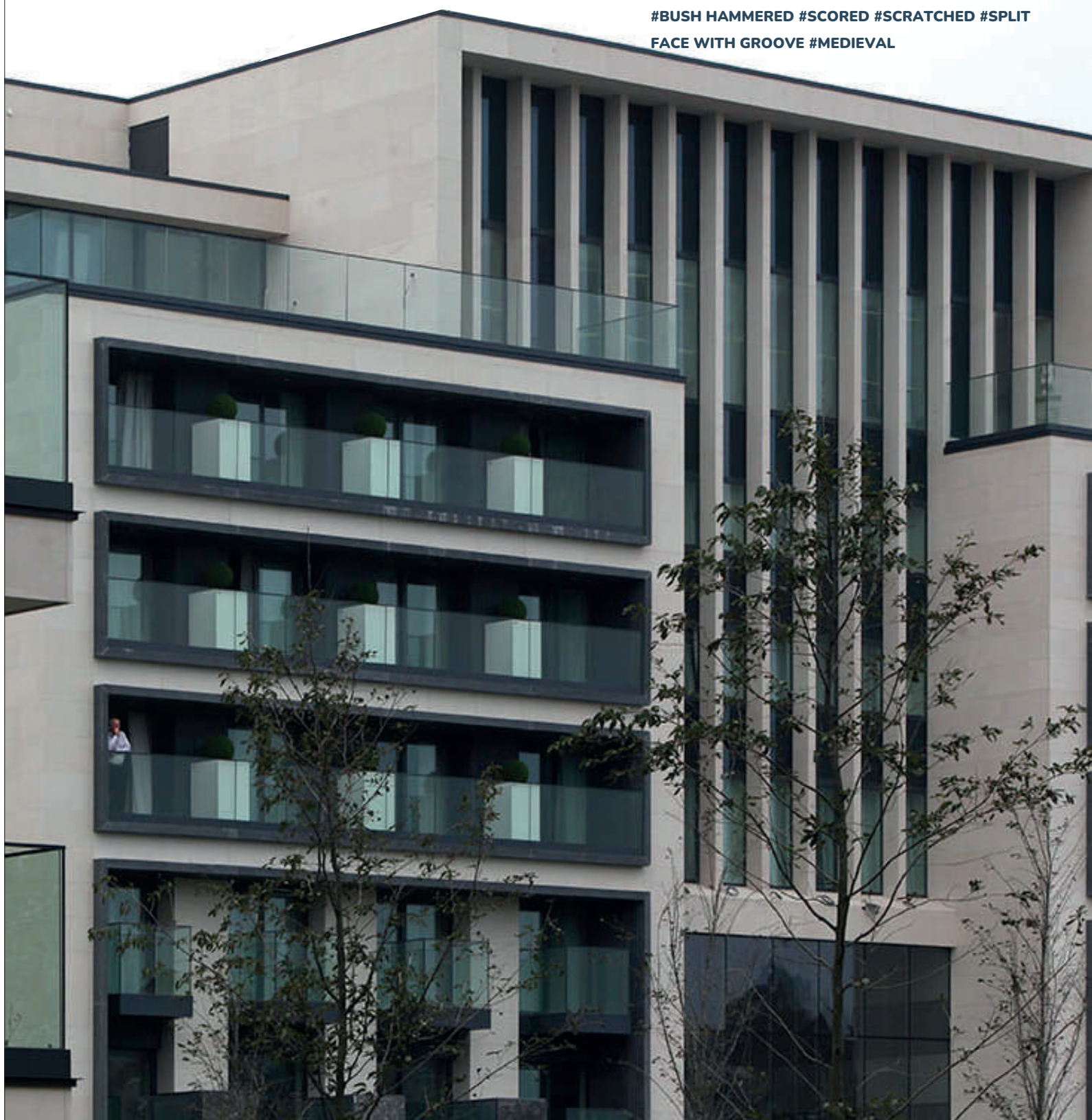


# MOLEANOS WHITE

## LIMESTONE

The **Hotel La Réserve, Knokke - Heist**,  
is the perfect example of facade made  
out of our Moleanos white

#HONED #BRUSHED #POLISHED #SANDBLASTED  
#BUSH HAMMERED #SCORED #SCRATCHED #SPLIT  
FACE WITH GROOVE #MEDIEVAL







NORTH  
AMERICA



# CODAÇAL REAL

LIMESTONE

The **Wild Horse Casino** located in Phoenix is a luxurious casino. At the heart of this experience is **Codaçal Real**, a hallmark of excellence in design and craftsmanship.

#HONED #BRUSHED #POLISHED #SANDBLASTED  
#BUSH HAMMERED #SCORED #SCRATCHED #SPLIT  
FACE WITH GROOVE #MEDIEVAL





# MOCA CREME LIMESTONE

The **Rohan Business Center**, located in **Prague**, features exquisite **MOCA CREME LIMESTONE** with warm beige tones and fine parallel veining, adding a touch of sophistication and durability to the building's design.

#HONED #BRUSHED #POLISHED #SANDBLASTED  
#BUSH HAMMERED #SCORED #SCRATCHED #SPLIT  
FACE WITH GROOVE #MEDIEVAL







EUROPE

# FIGUEIRAS BEJE LIMESTONE

The **LES BERGES** is a masterpiece of refined architecture and exquisite design. The stairs of this beautiful square are made with **Figueiras Beje Limestone**, which, in its beige tones, brings brightness to this iconic square.

#HONED #BRUSHED #POLISHED #SANDBLASTED  
#BUSH HAMMERED #FLAMED #SCRATCHED #SPLIT  
FACE WITH GROOVE #MEDIEVAL







# GASCOGNE BEJE LIMESTONE

The **Palácio Al-Qasr** in **Dubai** is a remarkable testament to the spirit of the people and leaders of the United Arab Emirates. The palace is adorned with **Portuguese limestone** known as **Gascogne Beige**, whose grain represents the sand of the Dubai desert.

**#HONED #BRUSHED #POLISHED #SANDBLASTED #BUSH  
HAMMERED #SCORED #SCRATCHED #SPLIT FACE WITH  
GROOVE #MEDIEVAL**







# ATAIJA AZUL LIMESTONE

This **Private House** in **Portugal** has a **facade** covered with beautiful **Portuguese limestone**. The **Ataija Azul limestone**, with its blue tone, gives vibrant life to this house.

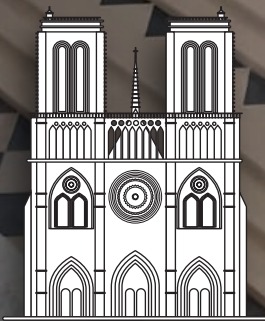
#HONED #BRUSHED #POLISHED #SANDBLASTED  
#BUSH HAMMERED #FLAMED #SCRATCHED  
#SPLIT FACE WITH GROOVE #MEDIEVAL





# Notre-Dame Cathedral

The **Notre-Dame Cathedral**, one of the world's most iconic monuments, reopened to the public after the devastating **fires** that affected it in **2019**. This **historic moment** was marked by the dedication and collaboration of numerous entities in its **reconstruction**, and **MVC** is proud to have been one of them.





# VIDRAÇO MOLEANOS

LIMESTONE

For this project, the **VIDRAÇO MOLEANOS LIMESTONE** was chosen, renowned for its **durability** and **quality**, seamlessly blending with the sublime architecture of this monument.

#HONED #BRUSHED #POLISHED #SANDBLASTED #BUSH  
HAMMERED #SCORED #SCRATCHED #SPLIT FACE WITH  
GROOVE #MEDIEVAL







# CREME MÓS

## LIMESTONE

This **luxury staircase** is made with **creme mos limestone**. This beige-toned stone, with its large quantity of grain, gives an aesthetic look to any building it adorns.

#HONED #BRUSHED #POLISHED #SANDBLASTED  
#BUSH HAMMERED #SCORED #SCRATCHED #SPLIT  
FACE WITH GROOVE #MEDIEVAL #SPLIT FACE





# FIGUEIRAS BLUE

LIMESTONE

The interior of this office located in the **United Kingdom** features **Figueiras Blue Limestone**, which adds spirit to this beautiful interior with its **polished** finish and **blue tone**.

#HONED #BRUSHED #POLISHED #SANDBLASTED #BUSH  
HAMMERED #SCORED #SCRATCHED #SPLIT FACE WITH  
GROOVE #MEDIEVAL #SPLIT FACE #FLAMED





# FIGUEIRAS MIX

LIMESTONE

The **FIGUEIRAS MIX**, with its two-tone beige and blue, gives the idea of movement with its mix.

#HONED #BRUSHED #POLISHED #SANDBLASTED  
#BUSH HAMMERED #FLAMED #SCRATCHED #SPLIT  
FACE WITH GROOVE #MEDIEVAL #SPLIT FACE





# ATAIJA MIX LIMESTONE

The **ATAIJA MIX**, featuring a two-tone beige and blue, is one of the most famous **Portuguese stones** due to its **resistance** and **durability**.

#HONED #BRUSHED #POLISHED #SANDBLASTED  
#BUSH HAMMERED #FLAMED #SCRATCHED #SPLIT  
FACE WITH GROOVE #MEDIEVAL #SPLIT FACE







ASIA

# ATLANTIC BLUE LIMESTONE

The **NOBOKOV** clubhouse consists of six floors, 15 apartments, and 32 parking spaces. The sixth floor is home to a penthouse that features a terrace. This project showcases Atlantic Blue Limestone provided by MVC - Portuguese Limestones!

#HONED #BRUSHED #POLISHED #SANDBLASTED  
#BUSH HAMMERED #FLAMED #SCRATCHED  
#SPLIT FACE WITH GROOVE #MEDIEVAL #SPLIT











# LIOZ MVC

## LIMESTONE

The **LIOZ MVC** is one of the most searched stones worldwide due to its unique **golden pattern**, along with various variations that feature distinctive **fossils** and **veins**.

#HONED #BRUSHED #POLISHED #SANDBLASTED #BUSH  
HAMMERED







# ALPININA

## LIMESTONE

The **ALPININA** is our **roughest limestone** and one of the most exclusive, featuring a **beige color** and various **combinations** for different decorations.

#HONED #BRUSHED #POLISHED #SANDBLASTED  
#BUSH HAMMERED #SCRATCHED #SPLIT FACE WITH  
GROOVE #MEDIEVAL #SPLIT FACE.







MOLEANOS N4

# OUR QUARRIES

We own nine quarries, ensuring full control over quality, supply, and production from extraction to shipping. This guarantees consistent standards, reliable supply, and strict quality control, delivering premium Portuguese limestone efficiently to meet global market demands.

With this fully integrated approach, we provide top-tier limestone products, combining tradition, innovation, and excellence to meet the demands of architects, designers, and construction professionals worldwide.





# MVC TECHNOLOGY

MVC - Portuguese Limestone is ready to realize projects of any size and format with advanced technology and high production capacity.

The company operates four cutting machines for precise block-to-slab cutting, along with a Donatoni, a polishing line, a flaming line, and a resin line for custom limestone finishes.

For complex designs, MVC utilizes six 5-axis CNC machines, three 3-axis all from the well know brand CMS machines, and a multi-wire CNC machine, ensuring precision and innovation.



# SPECIAL STONE

At MVC, our CNC machines have produced some truly remarkable works of art, showcasing the precision and craftsmanship that our technology enables. These exquisite limestone pieces are displayed in our showroom, located within our factory, allowing clients to see firsthand the intricate details and superior quality our machines can achieve.

From elegant sculptures to finely carved architectural elements, our **technology** transforms raw limestone into stunning artistic creations, demonstrating the full potential of our fabrication capabilities.



**DAVID'S BUST**





**MOLEANOS' CUP**



**LOW RELIEF PANEL**

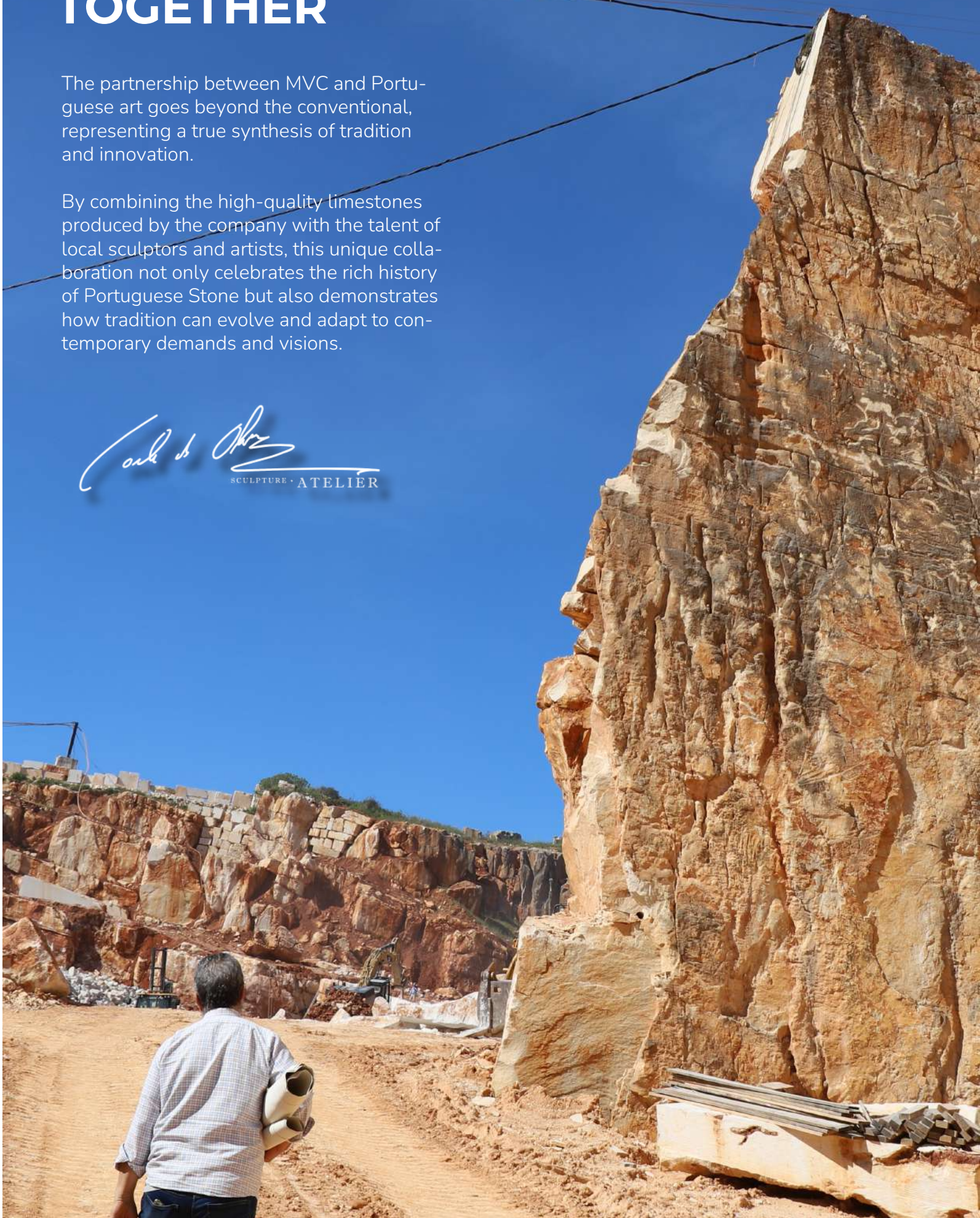


# MVC AND ART TOGETHER

The partnership between MVC and Portuguese art goes beyond the conventional, representing a true synthesis of tradition and innovation.

By combining the high-quality limestones produced by the company with the talent of local sculptors and artists, this unique collaboration not only celebrates the rich history of Portuguese Stone but also demonstrates how tradition can evolve and adapt to contemporary demands and visions.

*Carlos da Silva*  
SCULPTURE • ATELIER









# GREEN ENERGY

MVC Portuguese Limestones reinforces its commitment to sustainability by expanding its solar energy capabilities. With the increase in solar panel equipment, the company has increased its photovoltaic power to 832 kWh. This eco-friendly initiative is aligned with the company's efforts to reduce its **ecological footprint**.







# LABORATORY

MVC- Portuguese Limestones, renowned for its unwavering commitment to quality, faces the challenge of ensuring the **durability** and **safety** of its products in countries with different **climatic conditions**.

To meet these demands, the company has a **laboratory** where rigorous tests are conducted to ensure the durability of limestone.







# MVC TEAM

The success of our company is built upon the dedication, commitment, and trust of each and every one of you. We extend our deepest gratitude to our invaluable team members, whose unwavering effort, professionalism, and passion make a difference every single day. Your hard work is the foundation of our achievements.

We are equally grateful to our esteemed clients for their loyalty and continued partnership. Your trust in us motivates us to innovate, improve, and deliver the highest quality of service. It is through this collaboration that we continue to grow and evolve.

Together, we have forged a path of excellence and progress, and we remain steadfast in our commitment to delivering the very best. With this shared vision and unity, we are confident that even greater success lies ahead.

Thank you all for being an integral part of our journey!

Rogério Vigário	Luís Vigário	Sérgio Coelho	Carlos Coelho	Teresa Pereira	Nuno Constantino	Manuel Rodrigues	Eugenia Jose
Ricardo Rebelo	Nuno Gomes	Susana Silva	Orlando Pereira	Mª Helena Ferreira	Paulo Henriques	José Galante	Diogo Sousa
João Tullio	Carlos Estevão	Pedro Luís	Carlos Duarte	Ricardo Pereira	José Fernandes	Saandeep Maan	Paramjit Jassi
Pedro Matias	Gualter Constantino	Pedro Carreira	Edgar Gomes	Paulo Moreira	Pawan Kumar	Guryodh Singh	Francisco Zeferino
Yuvraj Singh	Miguel Tinta	Diogo Libório	Ricardo Gomes	André Amado	Lalit Bhutta		



# VISIT OUR ONLINE STORE







## ADDRESS

IC2 (EN 1), Km 98 · Ataíja de Cima

2460-713 Alcobaça - PORTUGAL

## CONTACTS

Email: [geral@mvc.pt](mailto:geral@mvc.pt)

Tel.: (+351) 262 505 060

Fax: (+351) 302 064 875

Email: [geral@mvc.pt](mailto:geral@mvc.pt)

GPS: 39° 32' N 8° 53' 50 W





**MVC**  
PORTUGUESE  
LIMESTONES